



OXFORD UNIVERSITY  
**INNOVATION**



UNIVERSITY OF  
**OXFORD**

# social ventures

Dr Philippa Christoforou

# PIPELINE

**Seeking**  
Funding,  
collaborators,  
mentors,  
advisors

## **SEREN – almost complete**

Delivering DNA-based diagnostics that improves outcomes of children and young adults with blood diseases in sub-Saharan Africa.

SEREN-OXFORD will function as the international business and development arm for SEREN-TANZANIA, which will be co-founded with faculty members of Muhimbili University of Health and Allied Sciences (MUHAS).

## **CREDO THERAPIES**

Online cognitive behavioural therapy platform for training and treatment of eating disorders. The initial focus will be the consumer market. Likely getting £1.2m pre-seed investment.

## **PATHOGEN SURVEILLANCE SPINOUT**

Molecular epidemiology to track new viral, bacterial and fungal variants using whole genome sequencing data. Subsidised support to be provided in LMICs to build local capacity.

## **MALARIA VACCINE COMPANY**

Focussing on delivering an effective malaria vaccine to LMICs and for the traveller market.



# PIPELINE

## HAND-2-HAND

An educational app in Bangladesh to help alleviate poverty

## SMART WATER PUMPS

Digital tracking of handpumps in LMIC rural areas to detect malfunctions and services them before they stop working to ensure water continues to flow.

## TRACER

Low-cost ultrasound services for LMICs.

## OxValue.ai

Valuing intellectual property (primarily in the ICT sector) through the use of algorithms.

**Seeking**  
Funding,  
collaborators,  
mentors,  
advisors

# PORTFOLIO

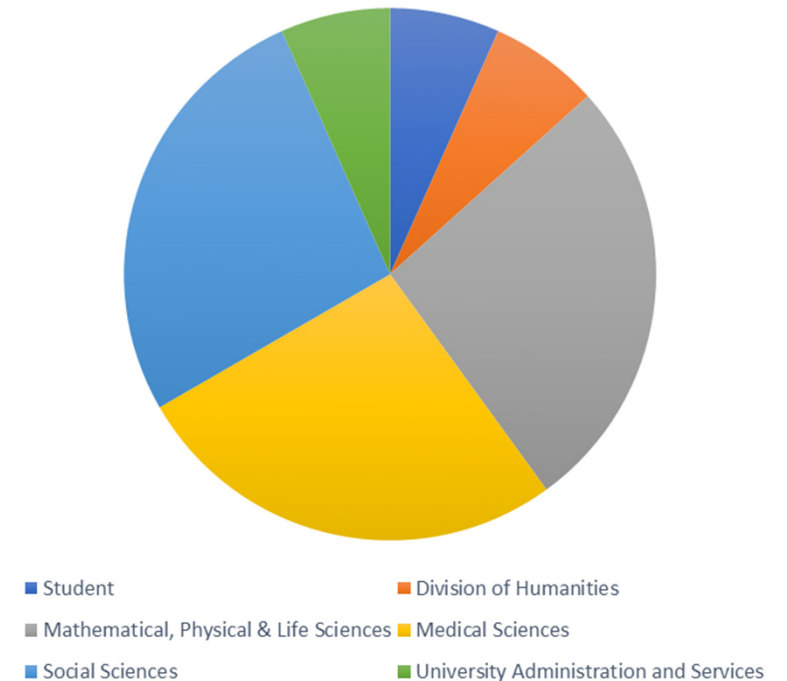
**15** Social Ventures

**8** Ventures with Female Founders (**FF**)

**13** UN Sustainable Development Goals targeted



Social Ventures by Founding Division



# GREATER CHANGE

Alleviating homelessness through empowerment

Greater Change works with charity partners delivering front-line work and helps them and their clients quickly overcome financial barriers on the pathway out of homelessness, with financial planning support and micro grants.

In the last 3 years, Greater Change has proven traction with local commissioners and refined its unique support practice that has the potential to change how the UK and other countries approach the homelessness crisis.

It is uniquely scalable as it is able to plug into partners rapidly across wide geographies and is now looking to grow its reach.

## Impact

- >500 people supported
- Projected 15k/month revenue in 2022
- Over 50% of clients from BAME backgrounds
- Over £3.5m in savings to the public purse
- Over 70% of clients now in stable housing.
- Less than 2% reoffending rate. National average >50%

## Looking for

Funding, mentors, collaborators, advisors



Seeking  
Investment &  
new board  
member



SOPHIA uses tools to identify and tackle ‘multidimensional’ poverty – that is, deprivations experienced at the individual and household levels, including health, education and living standards. It uses these tools to support businesses that want to make an impact on their employees’ wellbeing.

### Impact

- Reached 32,000 Costa Rican households, identifying 10% of country’s multidimensional poor.
- Projected poverty reduction of about 1,600 households from 2017 to 2021.
- Alongside BBVA Microfinance, support 2.7million clients in Latin America.
- Co-published a report with Citi (Citigroup) on the use of Multidimensional Poverty Measurement to guide social investments.



Luis Pérez from Medellín, Colombia



### Looking for

Funding, mentors, collaborators, advisors



The OxVent is a high-performance, medical-grade, mechanical ventilator that is inexpensive, quick to manufacture, rapid to deploy and scalable.

It is ideally suited for emergency situations, such as the COVID-19 pandemic; low-resource settings, such as in developing countries, and routine procedures requiring general anaesthesia.

### Some facts

- Born out of the 2020 Coronavirus pandemic and the UK Government's 'Ventilator Challenge'
- ISO13485:2016 certified
- Oxford Trust Covid Innovation Heroes Award for Medical Engineering

### Looking for

Funding, mentors, collaborators, advisors



# NATURE-BASED INSETTING<sup>FF</sup>



Transitioning businesses to genuinely ethical and environmentally sustainable practice

Individual businesses can play a key role in sustaining a healthy, functioning natural environment and a stable climate system to human wealth and wellbeing.

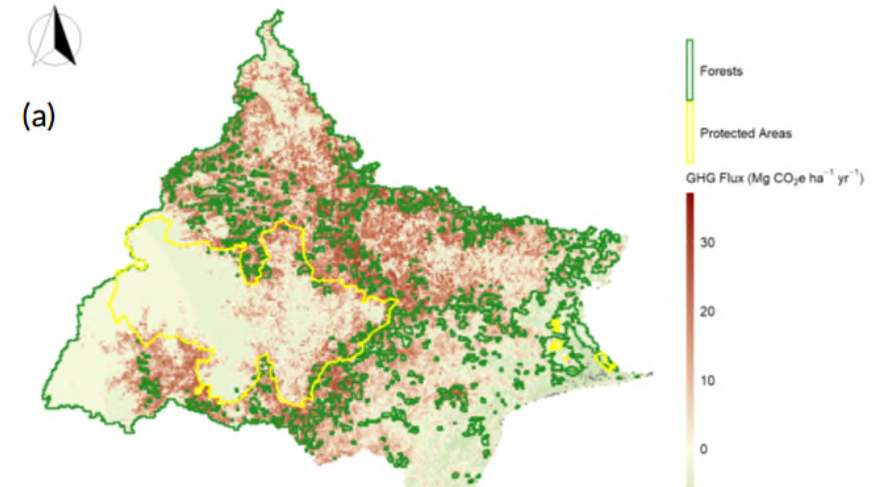
NBI help organisations set and implement robust evidence-based targets for mitigating and insetting impacts on climate, biodiversity, and society through nature-based solutions. This enables companies to enhance the value and resilience of their supply chains, whilst meeting socially just nature-positive and net-zero pledges.

## Some facts

- Incorporated in 2021
- Collaborating with Reckitt for biodiversity and net-zero targets
- Initial work is focused on 5 key raw materials: palm oil, latex, clove, patchouli, and orange oils.

## Looking for

Funding, mentors, collaborators, advisors





The Global Health Research Accelerator is a social enterprise that has been set up to provide a sustainable income for The Global Health Network. The aim of The Global Health Network is to support, enable, guide and enhance research in low-resource settings and does so by providing open and free access to research tools, resources, guidance and training to health workers, research teams and laboratory staff. It enables many thousands of healthcare workers in every setting to undertake the same international standard research.

### Some facts

- Over 1.4 million online research skills courses taken
- Over 300,000 protocols, templates and guidance documents have been downloaded

Looking for  
Funding, mentors, collaborators, advisors



# SKYLARK WORKS

Helping businesses do good and charities do business



Advisory services and collective philanthropy.

Working with philanthropists, family offices and corporates to guide and support their work in the field of social impact – whether charitable or investment.

Creating a philanthropic collective to deliver community-led social impact to create long-term, sustainable social value by supporting charities across the UK and beyond.

## Some facts

- Over 40 impactful organisations supported
- Over 150 connections made to help grow communities

## Looking for

Funding, mentors, collaborators



[skylarkworks.com](https://skylarkworks.com)

A not-for-profit for researching and representing British Indians, analysing emerging events in the Indian Sub-continent and within its diaspora and providing a platform for dialogue for the diaspora and to disrupt 'echo-chambers'.

### Some facts

- Incorporated 2022
- All-female board, volunteer led
- Undertook Covid-19 research to inform BME vaccine attitudes, was amongst the first to publish vaccine hesitancy in British Indians
- Worked with the NHS, No.10, policymakers, and Parliamentarians to produce culturally appropriate COVID-19 outreach strategy
- Produced (and continuing) seminal work in mental health in collaboration with NHS England
- Secretariat for the new India All-Party Parliamentary Group (Trade & Investment)

Looking for  
Funding, mentors, collaborators, advisors





# ROGUE INTERROBANG

Using creative thinking to solve wicked problems

Rogue Interrobang helps people live their best lives, and helps organizations to empower their members to enable those organizations to create a better world.

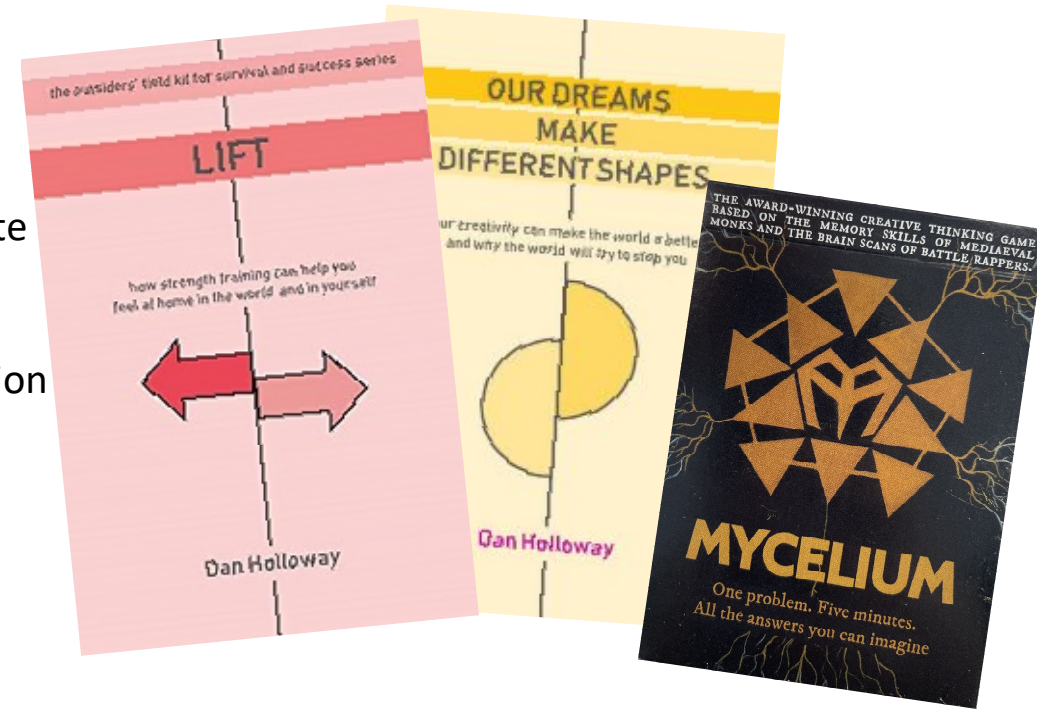
Whether you want a motivational speaker to help your team believe they can create meaningful change in the world; someone to run a workshop to impart invaluable skills; a coach to enable you to achieve a life you never thought possible or just to improve a particular skill; or someone to help you understand what your organization is missing that will help it not just survive but thrive, Rogue Interrobang can help.

## Some facts

- Delivers creative thinking training
- Provides workshops on unlocking the potential of a diverse workforce
- Clients include the Cabinet Office, HMRC, Cheney School, Open University, Association of Research Managers and Administrators, Advice UK and the EU Eastern Partnership Civil Leadership Programme.
- Products include Mycelium, a card game that makes you more creative whilst having fun, and two books entitled “Our Dreams Make Different Shapes” and “Lift”.

## Looking for

Funding, mentors, collaborators, advisors



[rogueinterrobang.com](http://rogueinterrobang.com)

# OXPROX

Improving the ESG outcomes of publicly traded corporations by enhancing the efficacy of shareholder ownership rights.

OxProx is a public database of the proxy voting records of institutional investors – mutual funds, index funds, pension funds, and others. The voting records are for both management proposals (e.g. director elections; appointment of auditors) and shareholder proposals (e.g. GHG emissions; water & wastewater management; ecological impact; human rights & community relations; diversity & inclusion; supply chain management; business ethics). Improved transparency and comprehensive data will improve investor accountability, voting outcomes, and business practices.

## Some facts

- First global public database of proxy voting records on shareholder (ESG) proposals to public companies.
- Much of the database work is being done in partnership Girl Power USA Foundation, a not-for-profit that provides meaningful work and leadership opportunities (mainly) to young women in (primarily) developing economies.

## Looking for

Funding, collaborators, advisors



<https://oxprox.org>

# OPENCLINICAL CIC

Create and share best-practice pathways for better, safer care

OpenClinical-based apps support care professionals to practise in compliance with guidelines. Better compliance saves costs and can save lives, but guidelines are complex. OPS manages the complexity. Only pathways for the individual case are presented, along with all valid decision options, and arguments for and against each option. This is “Transparent AI”, and is well accepted by clinicians and carers.

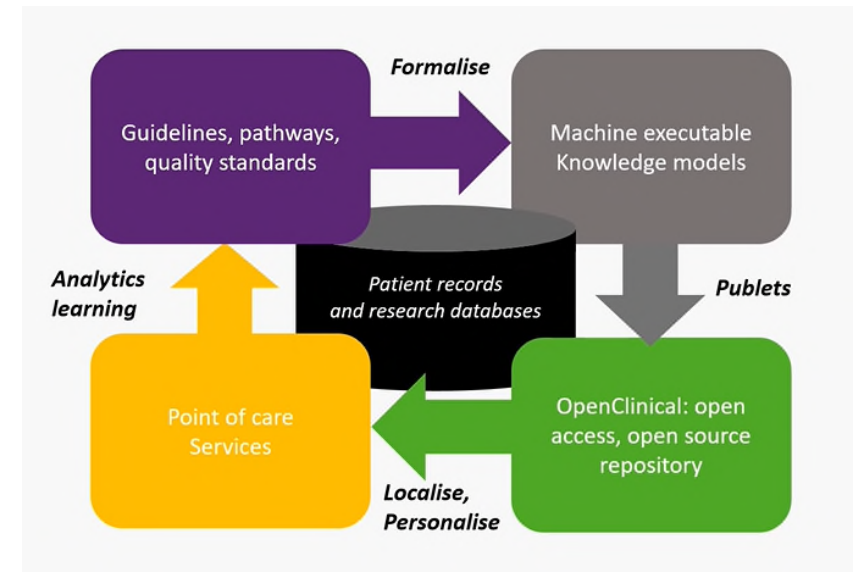
OpenClinical.net is a free-to-use platform for researchers and clinicians to compose, share, review and enact new or revised guidelines, which can then be submitted to an approving authority. OPS is Open Source and can also be licensed for commercial use.

- **Some facts**

- Trial ongoing with Birmingham University
- Developing a pilot demonstrator for elder care with SeraCares
- Assisting a local vet to pilot OPS in animal health
- Symposium to celebrate OpenClinical’s founder the late Professor John Fox attracting speakers including from USA, Australia, New Zealand and Australia.

## Looking for

Funding, mentors, collaborators, advisors



openclinical.net



Promoting a culture of responsible research and innovation (RRI) in information and communications technologies

As a technologist in industry or academia what kind of world are you helping to create ?  
Beyond compliance with ethics, regulation and legislation what are the societal and environmental implications of your work?

Many public funders now consider RRI to be an essential component of fundable research projects. ORBIT provides tools, training & consultancy services for the research community to plan, bid, and implement principles of Responsible Innovation. ORBIT works with the next generation of research leaders across the ICT landscape including, AI, quantum, cyber, green energy, precision agriculture & biomedical sciences.

## Some facts

- Training doctoral candidates at 28 UK Universities
- Trained over 1200 delegates in RRI
- Courses in RRI, PAS 440, Ethics by design, data governance etc
- Organisational RRI Maturity Modelling tool suite
- Engaged in Culture Change activities with research leaders
- Funded by British Council to deliver courses in India

## Looking for

Funding, mentors, collaborators, advisors, support for worldwide expansion



# OXCARBON

## Transforming the Voluntary Carbon Offset Market

Despite the rapid expansion of the voluntary carbon offset market, it remains something of a “wild West” in terms of product differentiation, buyer information, and traceability.

OxCarbon seeks to address these issues by facilitating the creation of best-in-class carbon offsets through rigorous data collection, open access to verification records, and hosting transparent registries of listed carbon bonds.

### Some facts

- Works in partnership with the Global Mangrove Trust, a non-profit in Singapore that sponsors mangrove afforestation projects in Southeast Asia
- Hosts data for Kumi Analytics, a geospatial data firm, piloting the use of machine learning and satellite-based remote sensing to monitor carbon sequestration

### Looking for

Funding, mentors, collaborators, advisors



[www.marex.com/about-us/esg](http://www.marex.com/about-us/esg)  
[www.globalmangrove.org](http://www.globalmangrove.org)

**EXIT**



Minimising the impact of disease on communities by providing accurate and rapid testing

The company's vision and ambition is to create a world where disease doesn't disrupt normal life. They aim to minimise the impact of disease on individuals and communities by providing accurate and rapid testing throughout the world.

## Some facts

- Oxsed was acquired by Prenetics in November 2020, six months after incorporating.
- It was Oxford's first social venture acquisition.
- The OxLAMP test was developed to help global communities worldwide with rapid, portable, accurate results for the detection of COVID-19.
- OxLAMP tests identify COVID-19 in just 20 minutes without the use of a traditional laboratory, with 96% sensitivity / 99.9% specificity and have been put into use at airports globally, including in London Heathrow.

